

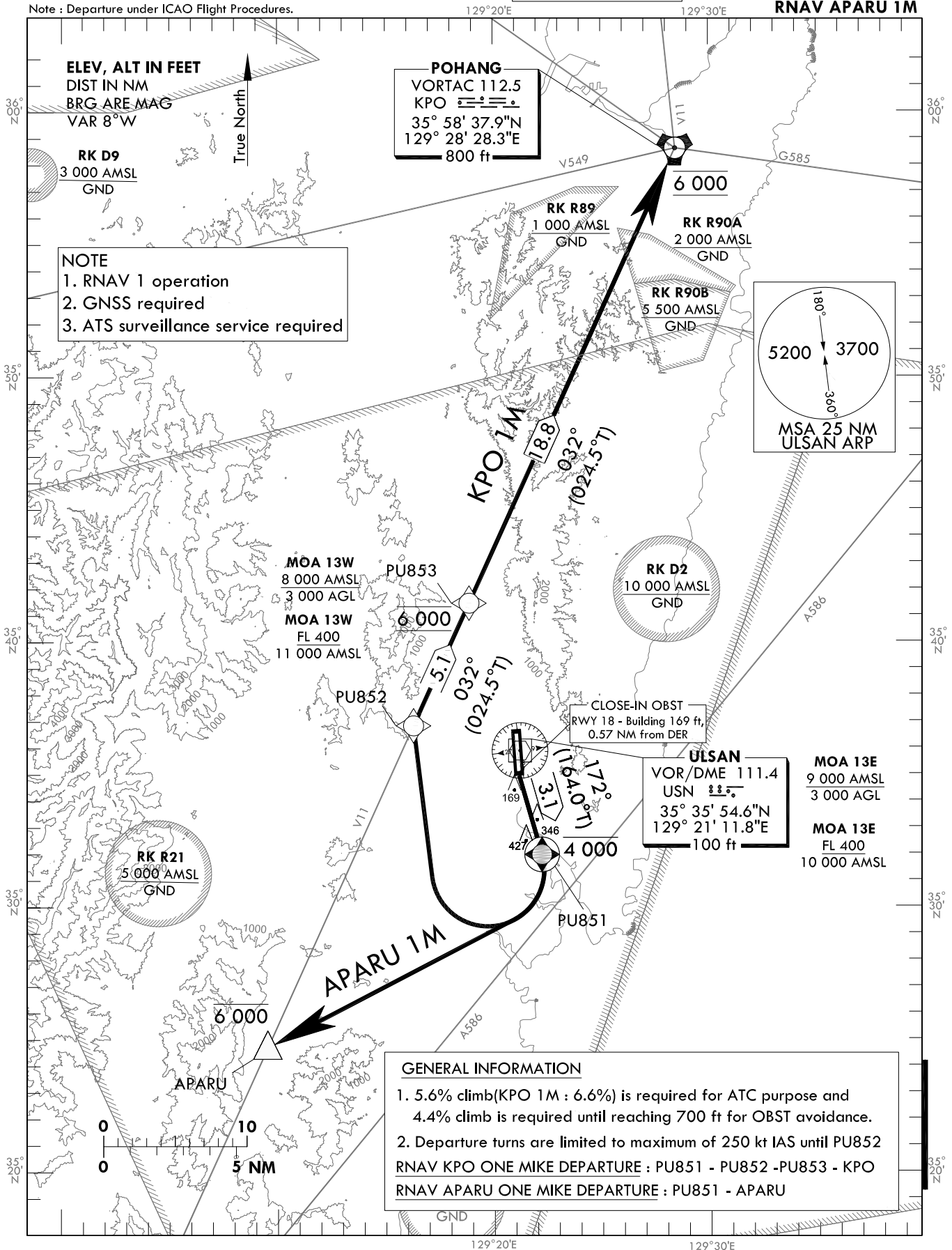
**STANDARD DEPARTURE CHART
INSTRUMENT(SID) - ICAO**

TRANSITION ALT 14 000
TRANSITION LVL FL 140

POHANG DEP 120.2
232.4
ULSAN TWR 118.75

**ULSAN/Ulsan(RKPU)
RWY 18
RNAV KPO 1M
RNAV APARU 1M**

Note : Departure under ICAO Flight Procedures.



Change : Withdrawal of danger area(D3).

ULSAN/Ulsan(RKPU)
RWY 18
RNAV KPO 1M, RNAV APARU 1M

AERONAUTICAL DATA TABULATION

Standard Instrument Departure Procedure Coding Tables

RNAV KPO 1M

Serial Number	Path Descriptor	Waypoint Identifier	Fly-over	Course/Track °M(°T)	Distance (NM)	Turn direction	Altitude (ft)	Speed (kt)	Coordinates	VPA/RDH	Navigation specification	Remarks
001	CF	P0851	Y	172(164.0)	3.1	-	-4 000	-250	353159.3N 1292212.1E	-	RNAV 1	-
002	DF	P0852	-	-	-	R	-	-250	353651.2N 1291616.8E	-	RNAV 1	-
003	TF	P0853	-	032(024.5)	5.1	-	@6 000	-	354128.6N 1291851.5E	-	RNAV 1	-
004	TF	KPO	-	032(024.5)	18.8	-	@6 000	-	355837.9N 1292828.3E	-	RNAV 1	-

RNAV APARU 1M

Serial Number	Path Descriptor	Waypoint Identifier	Fly-over	Course/Track °M(°T)	Distance (NM)	Turn direction	Altitude (ft)	Speed (kt)	Coordinates	VPA/RDH	Navigation specification	Remarks
001	CF	P0851	Y	172(164.0)	3.1	-	-4 000	-250	353159.3N 1292212.1E	-	RNAV 1	-
002	DF	APARU	-	-	-	R	-6 000	-	352442.1N 1290932.1E	-	RNAV 1	-

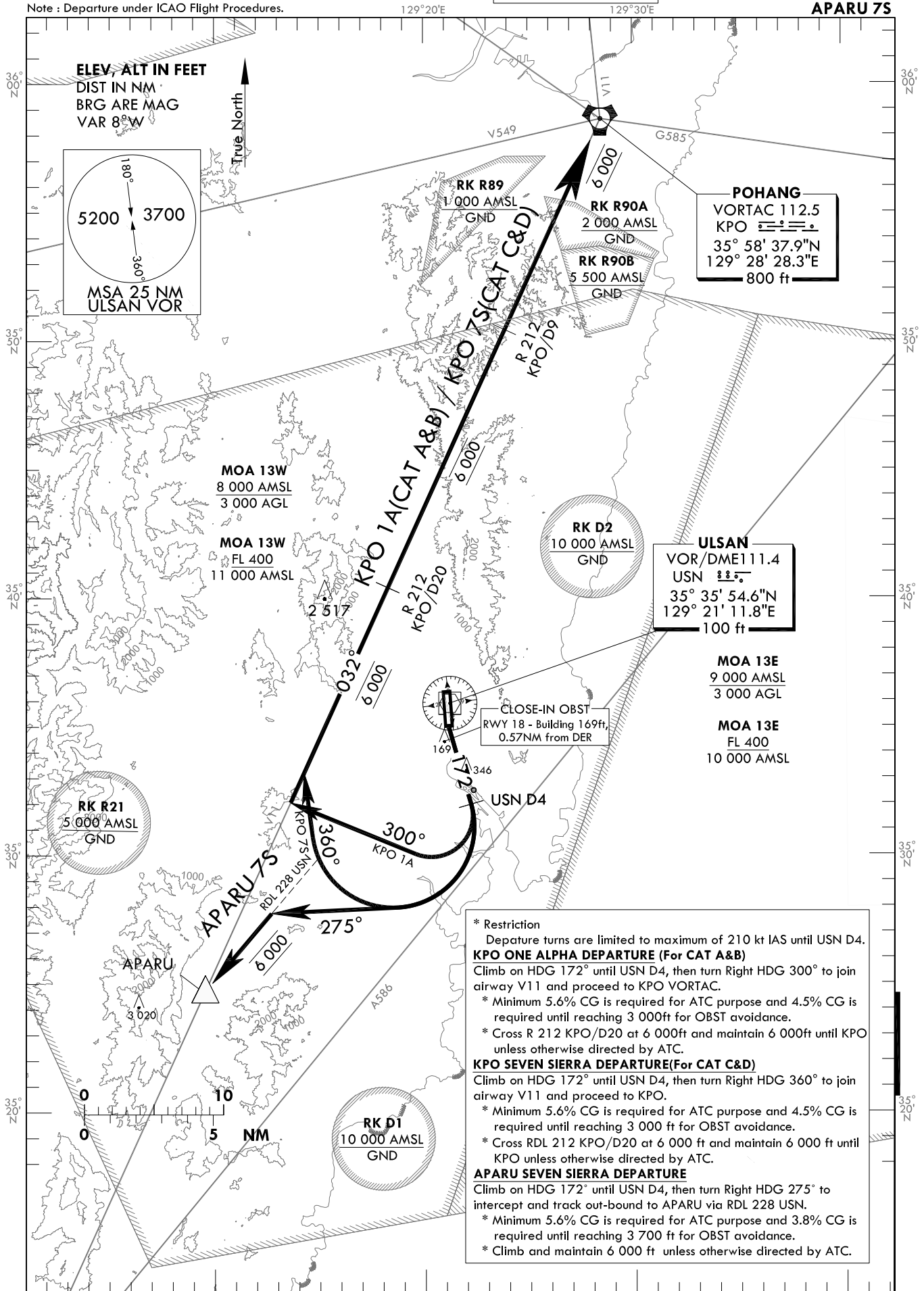
STANDARD DEPARTURE CHART
INSTRUMENT(SID) - ICAO

TRANSITION ALT 14 000
TRANSITION LVL FL 140

POHANG DEP 120.2
232.4
ULSAN TWR 118.75

ULSAN/Ulsan(RKPU)
RWY 18
KPO 1A, KPO 7S
APARU 7S

Note : Departure under ICAO Flight Procedures.



Change : Withdrawal of danger area(D3).

INTENTIONALLY

LEFT

BLANK

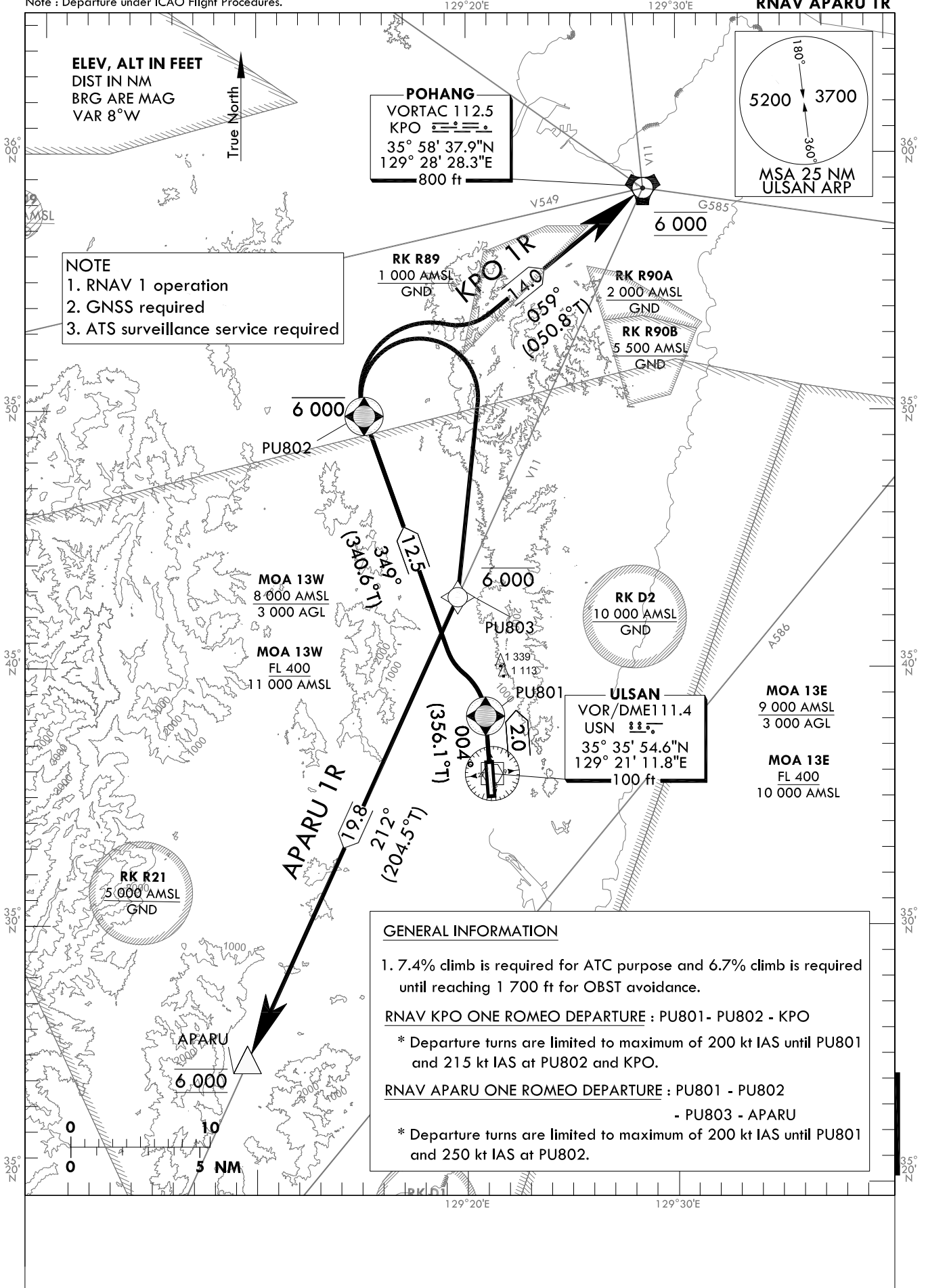
**STANDARD DEPARTURE CHART
INSTRUMENT(SID) - ICAO**

TRANSITION ALT 14 000
TRANSITION LVL FL 140

POHANG DEP 120.2
232.4
ULSAN TWR 118.75

**ULSAN/Ulsan(RKPU)
RWY 36
RNAV KPO 1R
RNAV APARU 1R**

Note : Departure under ICAO Flight Procedures.



Change : Withdrawal of danger area(D3).

ULSAN/Ulsan(RKPU)
RWY 36
RNAV KPO 1R, RNAV APARU 1R

AERONAUTICAL DATA TABULATION

Standard Instrument Departure Procedure Coding Tables

RNAV KPO 1R

Serial Number	Path Descriptor	Waypoint Identifier	Fly-over	Course/Track °M(°T)	Distance (NM)	Turn direction	Altitude (ft)	Speed (kt)	Coordinates	VPA/RDH	Navigation specification	Remarks
001	CF	PUB01	Y	004(356.1)	2.0	-	-	-200	353808.8N 1292053.5E	-	RNAV 1	-
002	CF	PUB02	Y	349(340.6)	12.5	-	-6 000	-215	354948.4N 1291508.6E	-	RNAV 1	-
003	TF	KPO	-	059(050.8)	14.0	-	@6 000	-215	355837.9N 1292828.3E	-	RNAV 1	-

RNAV APARU 1R

Serial Number	Path Descriptor	Waypoint Identifier	Fly-over	Course/Track °M(°T)	Distance (NM)	Turn direction	Altitude (ft)	Speed (kt)	Coordinates	VPA/RDH	Navigation specification	Remarks
001	CF	PUB01	Y	004(356.1)	2.0	-	-	-200	353808.8N 1292053.5E	-	RNAV 1	-
002	CF	PUB02	Y	349(340.6)	12.5	-	-6 000	-250	354948.4N 1291508.6E	-	RNAV 1	-
003	DF	PUB03	-	-	-	R	-6 000	-	354245.9N 1291934.7E	-	RNAV 1	-
004	TF	APARU	-	212(204.5)	19.8	-	@6 000	-	352442.1N 1290932.1E	-	RNAV 1	-

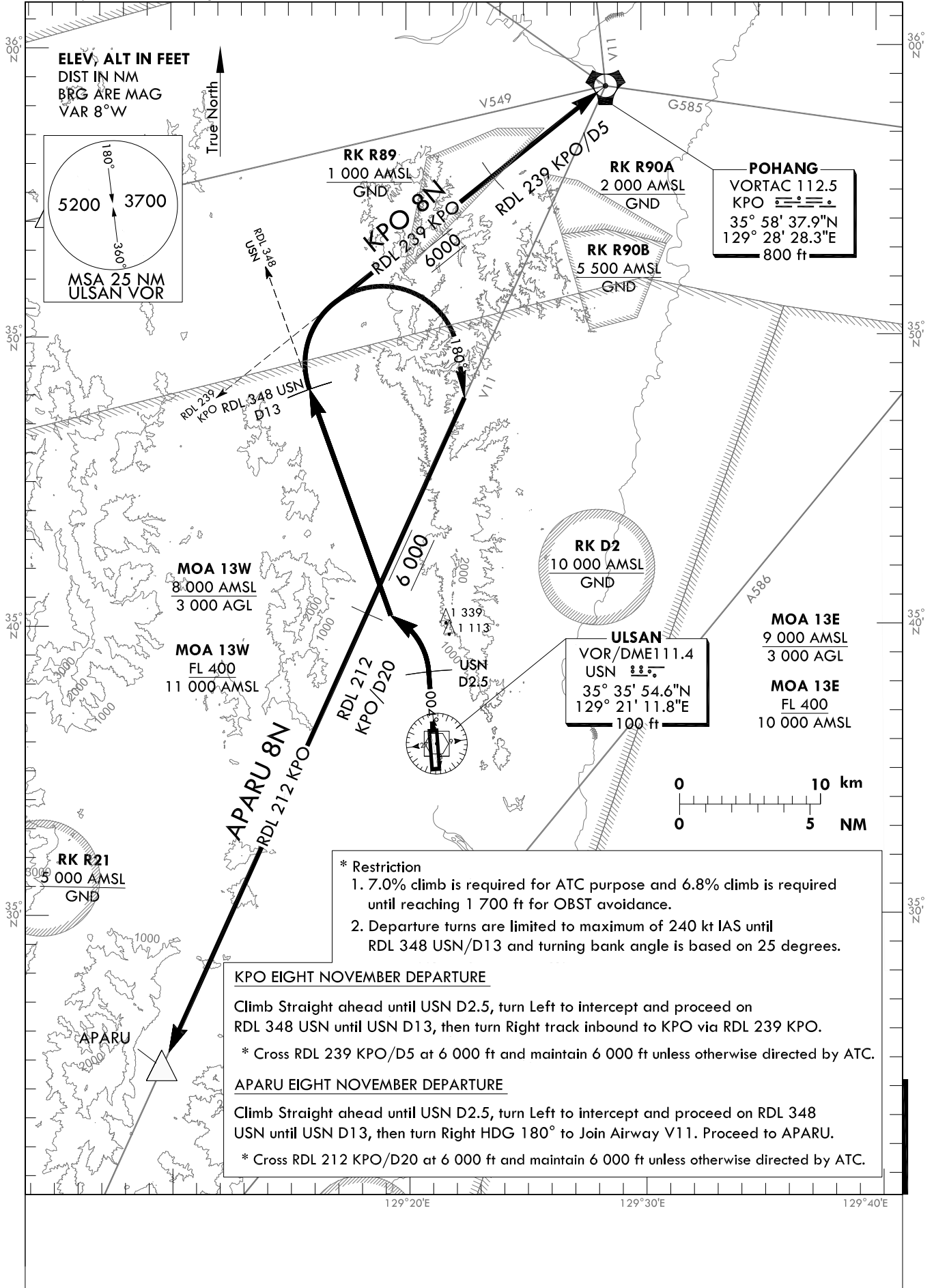
STANDARD DEPARTURE CHART
INSTRUMENT(SID) - ICAO

TRANSITION ALT 14 000
TRANSITION LVL FL 140

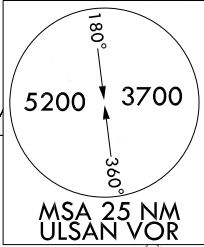
POHANG DEP 120.2
232.4
ULSAN TWR 118.75

ULSAN/Ulsan(RKPU)
RWY 36
KPO 8N
APARU 8N

Note : Departure under ICAO Flight Procedures.



ELEV. ALT IN FEET
DIST IN NM
BRG ARE MAG
VAR 8°W



POHANG
VORTAC 112.5
KPO
35° 58' 37.9"N
129° 28' 28.3"E
800 ft

RK D2
10 000 AMSL
GND

ULSAN
VOR/DME 11.4
USN
35° 35' 54.6"N
129° 21' 11.8"E
100 ft

MOA 13E
9 000 AMSL
3 000 AGL
MOA 13E
FL 400
10 000 AMSL

- * Restriction
- 7.0% climb is required for ATC purpose and 6.8% climb is required until reaching 1 700 ft for OBST avoidance.
 - Departure turns are limited to maximum of 240 kt IAS until RDL 348 USN/D13 and turning bank angle is based on 25 degrees.

KPO EIGHT NOVEMBER DEPARTURE

Climb Straight ahead until USN D2.5, turn Left to intercept and proceed on RDL 348 USN until USN D13, then turn Right track inbound to KPO via RDL 239 KPO.

* Cross RDL 239 KPO/D5 at 6 000 ft and maintain 6 000 ft unless otherwise directed by ATC.

APARU EIGHT NOVEMBER DEPARTURE

Climb Straight ahead until USN D2.5, turn Left to intercept and proceed on RDL 348 USN until USN D13, then turn Right HDG 180° to Join Airway V11. Proceed to APARU.

* Cross RDL 212 KPO/D20 at 6 000 ft and maintain 6 000 ft unless otherwise directed by ATC.

Change : Withdrawal of danger area(D3).

INTENTIONALLY

LEFT

BLANK